

# SPECTRUM GAMING



**A community for autistic young people**

**Individual Giving Guide**



## Welcome!

### Supporting Spectrum Gaming - every contribution counts!

At Spectrum Gaming, we want to combat the isolation autistic young people experience by creating a supportive and safe community for them.

**Your generosity plays a vital role in making that happen!**

In 2024, thanks to individual donations, we received an incredible £25,000! This group effort played a vital role in supporting us to maintain and develop services for over 1000 young people in the SG community!

---

**Together, we can create more opportunities, advocate for change, and empower autistic young people.**

---

All the funds raised are unrestricted, meaning we use them where they're needed most. Whether we're expanding our services, supporting more autistic young people across the country through advocacy, your donations will have a huge impact on helping us to scale up our work!

And if you'd prefer to fundraise for us instead, check out our fundraising packs on our [supporter page](#) and explore more ways to get involved!

Small amounts add up to make a massive impact!



**= £6000 a year**



**A Meetup Weekend!**

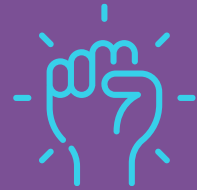
**giving young people in the SG community chance to have fun with friends, build confidence and find acceptance!**

## How your support will help young autistic people

As a result of being part of Spectrum Gaming's community, we see the following impact in the young people we work with:



Improved connections with others



Increased acceptance and understanding of autism

## Support us!

And help to combat isolation autistic young people across the UK!



Increased happiness



Reengaging with school and other services



**Ways to support us:**

1

Sign up to:



**easyfundraising**

**SHOP ONLINE...**

**and raise money for Spectrum Gaming!**

**£260  
raised!**

**through  
supporters on  
easyfundraising  
since April 2024 -  
at NO extra cost to  
them!**

**The more  
people who sign  
up, the more  
money we raise!**



## **How it works**

Over 7,000 brands will donate to us for FREE every time you use easyfundraising to shop with them **(at no extra cost to you!)** All you need to do is...

1. [Click here to sign up!](#)
2. Download the easyfundraising Donation Reminder. It's a handy tool that alerts you about a brand's donation opportunity while you shop online.
3. Shop online as you normally would, and raise money for Spectrum Gaming!

## Ways to support us:

2



Sign up to payroll giving

## DONATE THROUGH YOUR SALARY...

**and get immediate tax relief on your donations!**

Here's an example of how it works:

**£1**  
earnt



20p is  
paid in  
tax

If you pledge £10 a month, Spectrum Gaming receives the full amount but only £8 will be deducted from your net pay!

How to find out if you can do that with your employer:

1. Check to see if your employer is registered for Payroll Giving, and sign up using their processes
2. If they're not encourage them to sign up. [Head here for more info!](#)

**Remember: you can cancel at any time, and if you change jobs you'll need to transfer to a new scheme!**



## Ways to support us:

3

### Recurring and one off donations!

**Increase  
your  
IMPACT** | **With  
recurring  
donations!**

All donations we receive to Spectrum Gaming are gratefully received, recurring donations have a greater impact as they provide:

- reliable monthly support, helping us to plan activities for the year ahead!
- an 'amplified' effect, meaning that even small amounts add up to significant support over time!

**Every donation counts! Whatever amount you can donate, your support** enables us to create opportunities, strengthen our community, and ensure autistic young people have a place where they feel safe and accepted!



Donations help us to make bigger and bolder plans. Generous crowdfunding support helped us to turn the community centre from a dream to a reality in 2024!

[Click here to make a donation](#)

**Charity number: 1193763**

**Contact: [info@spectrumgaming.net](mailto:info@spectrumgaming.net)**

## The impact of your donations

**£5**



Provides snacks or refreshments for one young person attending a gaming session or social meet-up hosted by Spectrum Gaming!

**£10**



Covers the cost of materials for creative activities, like arts and crafts, at one of Spectrum Gaming's youth clubs.

**£20**



Provides food for SG's pet cockroaches for 6 months! These pets were specifically requested by the young people in the SG Learning Community and help them to connect with others over a shared interest!

**£50**



Supports seasonal meetups for our young people such as a Halloween party, giving young people opportunity to meet the friends they've made online!

**£100**



Provides five staff hours to work on our advocacy projects -which seek to create a society that works better for autistic young people!

**£250**



Essential but often overlooked! £250 could support SG with costs for funding behind-the-scenes activities, including subscriptions to vital systems that keep the charity running smoothly throughout the year.



**Thank you for  
supporting**

**SPECTRUM  
GAMING** 

**Charity number: 1193763**

**Contact: [info@spectrumgaming.net](mailto:info@spectrumgaming.net)**